

# MONTHLY MEMBERSHIP PROGRESS REPORT

District 24 I

Results as of: 5/31/2026

GMT:

LOCATION VIRGINIA

GMT CA

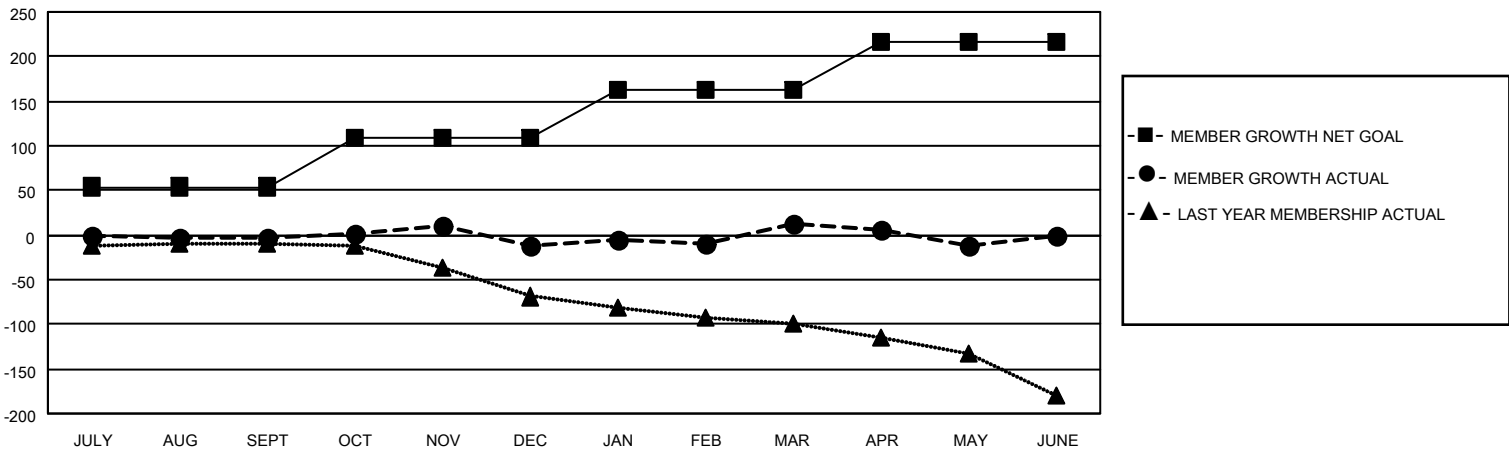
Clubs			
RESULTS FOR 2025-2026			
QUARTER	NEW CLUB GOAL	NEW CLUBS	DROPPED CLUBS
JULY/AUG/SEPT	0	0	1
OCT/NOV/DEC	0	0	2
JAN/FEB/MAR	1	0	0
APR/MAY/JUNE	0	0	0

Members			
RESULTS FOR 2025-2026			
QUARTER	MEMBER GROWTH NET GOAL	MEMBER GROWTH ACTUAL	DROPPED MEMBERS ACTUAL (including transfers)
JULY/AUG/SEPT	54	62	60
OCT/NOV/DEC	55	44	46
JAN/FEB/MAR	54	67	41
APR/MAY/JUNE	54	33	55

GOALS AND ACTUAL NEW CLUBS CUMULATIVE



GOALS AND ACTUAL MEMBERS CUMULATIVE



DROPPED CLUBS: 3	38 CLUBS OF 78 ADDED 1 OR MORE NEW MEMBERS	<u>GENDER DISTRIBUTION</u>	
		MALE	925 (59.52%)
		FEMALE	628 (40.41%)
<u>DROPPED MEMBERS</u>		TOTAL FAMILY UNIT MEMBERS 249	
DECEASED	31	FAMILY MEMBERS PAYING HALF DUES 129	
CLUB CANCELLED	6		
OTHER	165		
TOTAL	202		

[CLICK HERE FOR CUMULATIVE MEMBERSHIP DATA](#)